



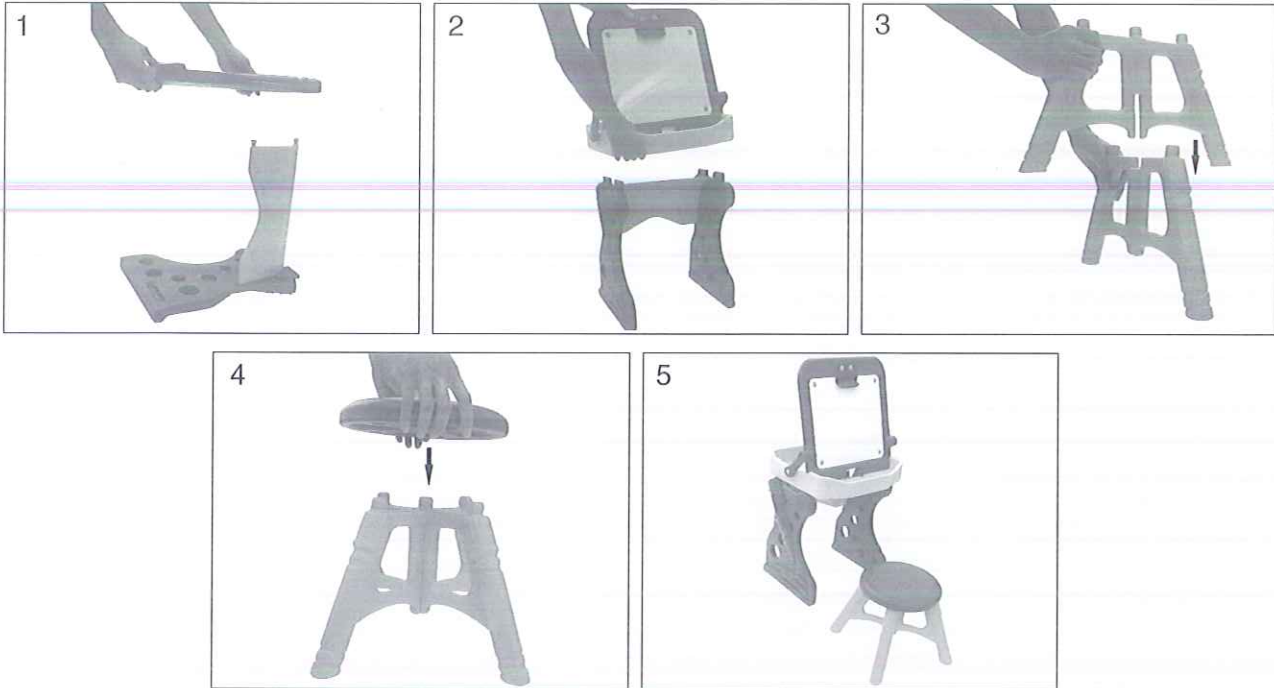
# FIRST ART STUDIO

## Assembly Instruction

NO. 5003  
Ages: 3+

### WARNING: CHOKING HAZARD - Small parts. Not for children under 3 years.

- Keep small parts necessary for assembly out of children's reach.
- Adult assembly required. No tools required.
- This item must be used on level ground. DO NOT use on an uneven surface.
- Adult supervision advised when item is in use.
- Maximum weight limit for stool is 23 kg (50 lbs).



## ASSEMBLY INSTRUCTIONS

1. To attach support panel, hold legs with crayon facing the outside as shown. Place the pegs on the outer, curved edge of the support bar into slots on the legs. Place pegs on upper edge of support bar into matching slots on top edge of legs. Push downward to securely lock into place.
2. Place the storage drawer onto the assembled legs, align oblong holes in the drawer matching pegs on the top of the leg assembly and press firmly downward until locked into place. Stick the anti-slip rubber pads to the bottom of the legs as shown.
3. Join the stool legs as shown, sliding downward until locked into position and edges are flush.
4. Align holes in the bottom of the seat with pegs on assembled stool legs. Press firmly downward and lock into place.
5. To set easel in upright position, lift the board from its upper edge and slot in the lower pegs of the board to the plastic clip located inside the storage drawer. Pinch the sides of the clip to lock in place. To lay surface down, pinch the clip to release the pegs on the board. Push the top of wipe off surface down while pulling the bottom edge toward you until flat.

## SAFETY AND MAINTENANCE

1. Make sure that all the pegs are securely tapped together before use.
2. Please check the unit regularly for any worn parts. If plastics are not assembled securely, may result in minor or moderate injury. Stool may pose a potentially hazardous of a fall or collapse if not snapped properly.

## CARE INSTRUCTIONS

- This desk was made for **INDOOR** use. DO NOT attempt to use or expose the unit outdoors. The board is weather sensitive, any wetness or excessive dampness will ruin the boards.
- DO NOT use any Spray or Dry Erase cleaners on the boards, as this may cause damage.
- Treat the boards surface with care; DO NOT use sharp pointed objects on the writing surface. Scratching the surface will cause permanent damage.
- Completely erase the magnetic dry erase surface before storing it for an extended period of time.
- If there is some hard-to-erase ink left on the magnetic dry erase board, use a "**slightly damp**" sponge (or paper towel) and wipe the board clean. Any excessive water may damage the board.

## LIMITED WARRANTY

Our products are covered under warranty for a period of 60 days from the date of purchase, under normal use and service, against defective workmanship and material. If you have recently purchased this product and find it to be defective in anyway, kindly return it to the "Source of Purchase" for a Full Refund or Exchange.

Should the product no longer be covered by your Purchase Receipt, or should you have any questions pertaining to our product, please call our Toll Free Customer Service for assistance.

Keep a copy of the UPC Code with proof of purchase receipt for any future Warranty Service.

Please retain packaging and assembly instructions for future reference.

### CUSTOMER SERVICE

USA & Canada: [service@grow-n-up.com](mailto:service@grow-n-up.com)  
Toll free hotline: 1-888-GNU-9898  
Other countries: [support@grow-n-up.com](mailto:support@grow-n-up.com)  
[www.grow-n-up.com](http://www.grow-n-up.com)

©2005 Grow'n Up Limited. All Rights Reserved.  
Tsim Sha Tsui East, Kowloon, Hong Kong  
**MADE IN CHINA**