



Qwikfold® Fun Slide Instruction Manual

No. 2012
Age: 1½ - 4y
GB

GB Keep Instruction Manual for further reference. Adult supervision at all time. No tools required.

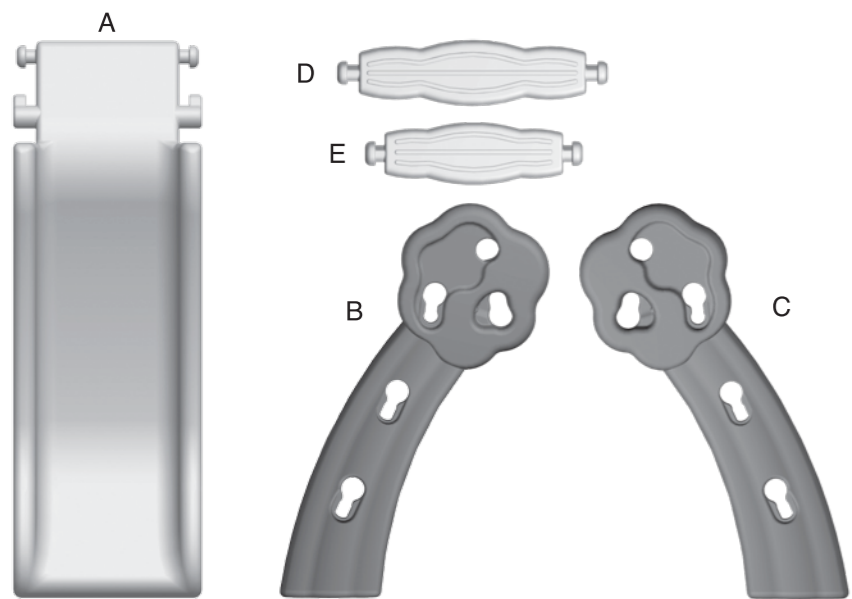
CAUTION: To avoid serious injury- DO NOT set up on a hard surface such as concrete, asphalt, wood, packed earth or other hard surfaces. Carpet over hard floors may not prevent injury.

- This item should be used on flat areas only.
- Place this product on level ground and at least 2 meters away from a fence, building, overhead branches, laundry line or electrical wires.
- DO NOT allow children to climb on the product when the product is wet.
- DO NOT allow children to wear loose-fitting clothing including ponchos, scarves and garments with drawstrings. Well fitted shoes must be worn at all times.
- WARNING: Only for domestic use. For indoor and outdoor use. This product is designed for normal residential use only, and is not intended for use in schools, parks, day care centers, nurseries, or other public places.
- When temperature falls below 32 °F / 0 °C, outdoor use of this product is not recommended. In extreme cold, plastic materials lose resilience and may become brittle and crack upon impact. Store product in a warmer, protected place.
- Adult supervision required.
- Maximum weight limit: 25 kg (55 lbs). Limit one child.

SAFETY AND MAINTENANCE

1. Make sure all parts are securely snapped together before use.
2. Please check the unit twice a month during the usage season for tightness, and tighten as required. It is particularly important that this procedure be followed at the beginning of each season. Replace as needed. If not checked regularly, parts can be loose or missed and components can become detached and cause injuries.
3. If slide chute is exposed to direct sunlight, always check to make sure it is not too hot for children to use. If the slide chute is hot, pour cold water on the slide chute until it cools. Check slide chute periodically during use.
4. Clean the slide regularly with soapy water in order to avoid a build up of static electricity.
5. DO NOT leave this item exposed to strong wind and inclement weather.
6. It is recommended that the slide be placed in a position unlikely to injure child's eyes with respect to sun.

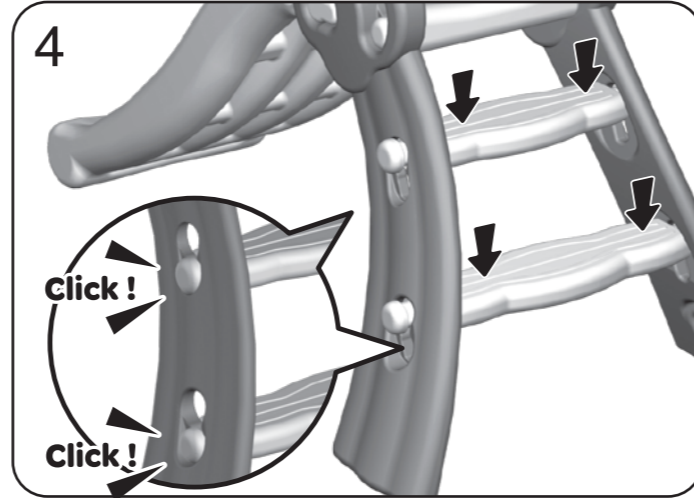
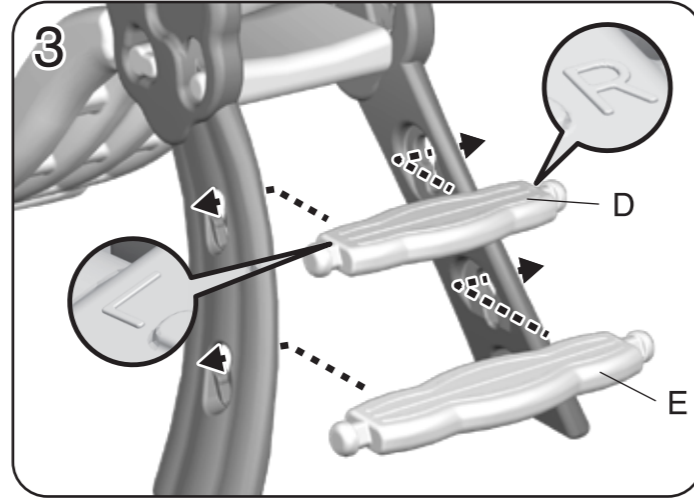
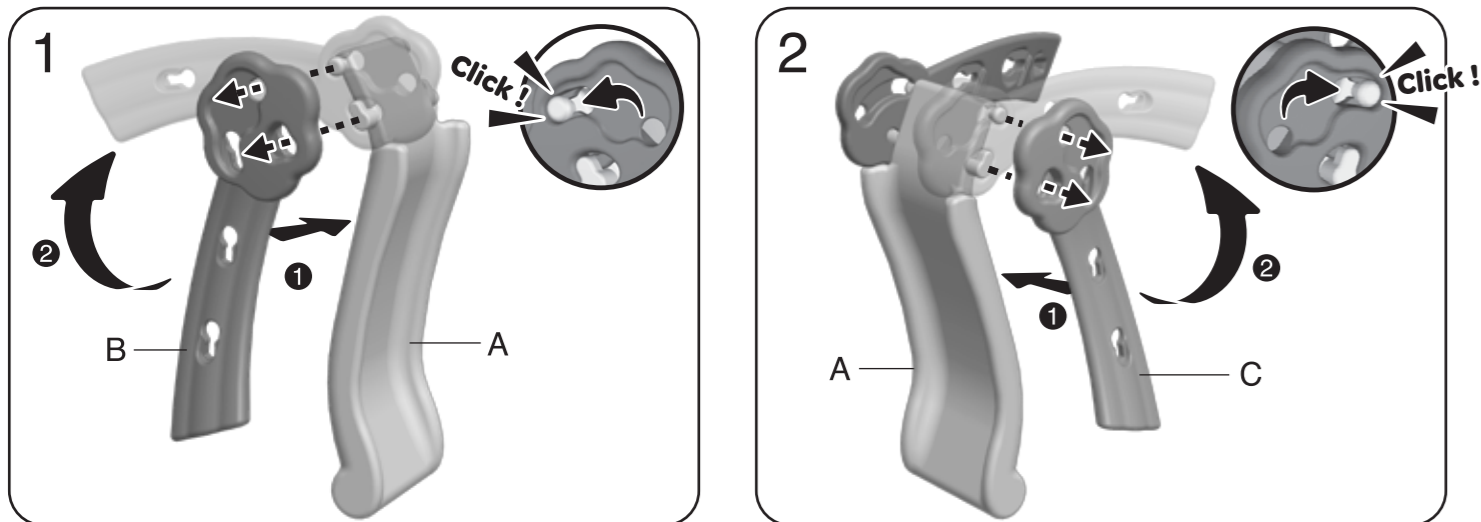
PARTS



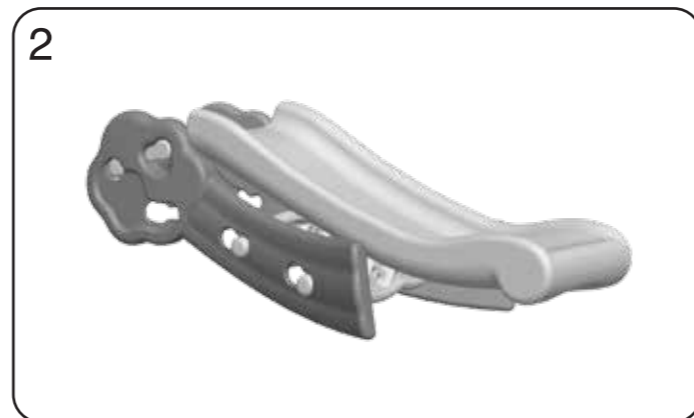
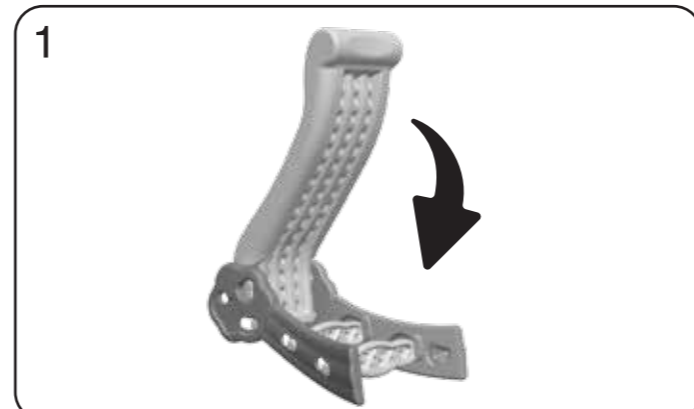
#	DESCRIPTION	QTY
A	Slide chute	1
B	Right side panel	1
C	Left side panel	1
D	Lower step	1
E	Upper step	1

Notes: Illustrations not to scale.

ASSEMBLY:



STORAGE:



LIMITED WARRANTY

Our products are covered under warranty for a period of 1 year* from the date of purchase, under normal use and service, against defective workmanship and material. If you have recently purchased this product and find it to be defective in any way, kindly return it to the "Source of Purchase" for a Full Refund or Exchange. Should the product no longer be covered by your Purchase Receipt, or should you have any questions pertaining to our product, please call our Toll Free Customer Service for assistance. Keep a copy of the UPC Code with proof of purchase receipt for any future Warranty Service. Please retain packaging and instruction manual for future reference. *The warranty period is three (3) months for daycare or commercial purchasers.



© 2018 Grow'n Up Limited.
All Rights Reserved.
Room 808B New Mandarin Plaza, Tsim Sha Tsui, Kowloon, Hong Kong.
MADE IN CHINA (SZ)

趣味折叠小滑梯 组装说明书

产品型号: 2012
适用年龄: 1.5-4岁
执行标准: GB 6675.1-2014
GB 6675.2-2014
GB 6675.3-2014
GB 6675.4-2014



请勿丢弃: 重要文件。请保留本说明书以备日后参考。请遵守所有安全警告和注意事项, 以降低严重或致命伤害的风险。

警告: 为避免严重伤害, 切勿在坚硬的表面上安装本产品。跌倒在坚硬表面可能会导致头部受伤或造成其他严重伤害。切勿放置在混凝土、沥青、木材、土夯或其他坚硬表面上。在硬地板铺设地毯并不能防止受伤。

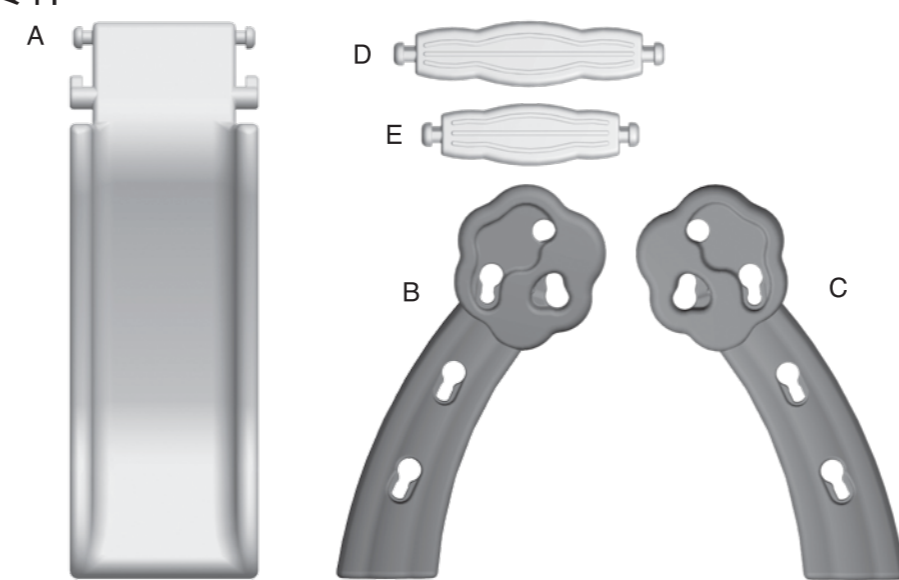
安全指示:

- 此产品专为家庭使用设计, 适用于室内或室外。不适用于学校、公园、日间护理中心、幼儿园及其他公众地方使用。
- 本产品须由成人组装, 无须使用任何工具。
- 请将本产品放置在水平地面上, 建议将玩具放置在距离其他结构或者障碍物 (例如栅栏、车库、房子、头顶的树枝、洗衣管道或电线等) 至少 2 米 (6.5 英尺) 距离的地方。
- 儿童玩耍时需由成人现场监督, 别让儿童单独使用此产品。
- 正确使用滑梯, 脚先滑下。每次限一儿童。
- 使用本产品时请戴单车头盔或其他运动头盔。
- 本产品专为1岁半-4岁的儿童使用设计。
- 本产品最大承重限制为: 25公斤 (55磅)。每次限一位儿童使用。

注意:

- 产品未完成组装前, 请勿允许儿童玩耍。
- 请勿让儿童以任何危险, 非预期的方式使用本产品。
- 请勿让儿童在玩耍时从产品上跃下。
- 儿童在本产品上玩耍时请为其穿上合适的衣服。避免穿太光滑鞋底的鞋子。不要让儿童穿戴斗篷、丝巾、面罩、珠宝、宽松的鞋子、宽松的衣服、领带等。任何时候都需要穿着合适鞋履。
- 使用前请确保所有零件安全紧固。

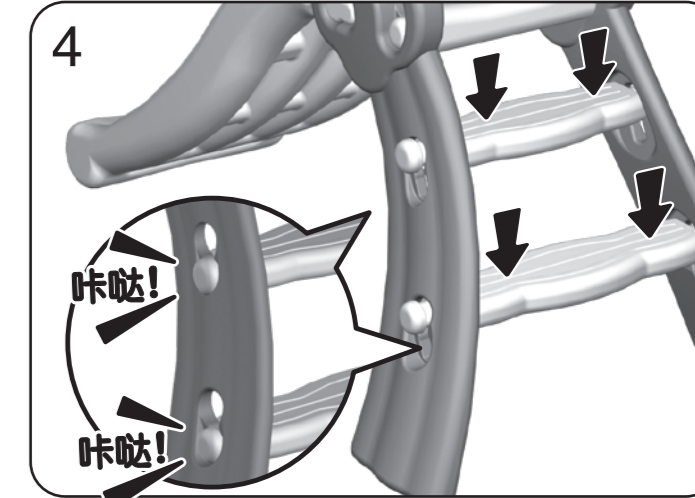
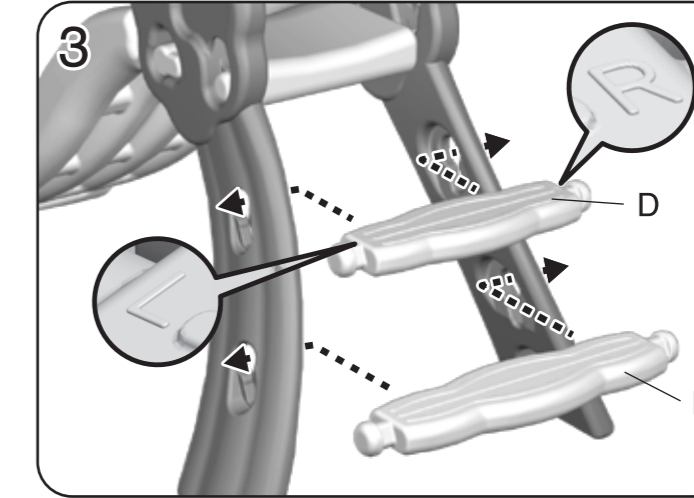
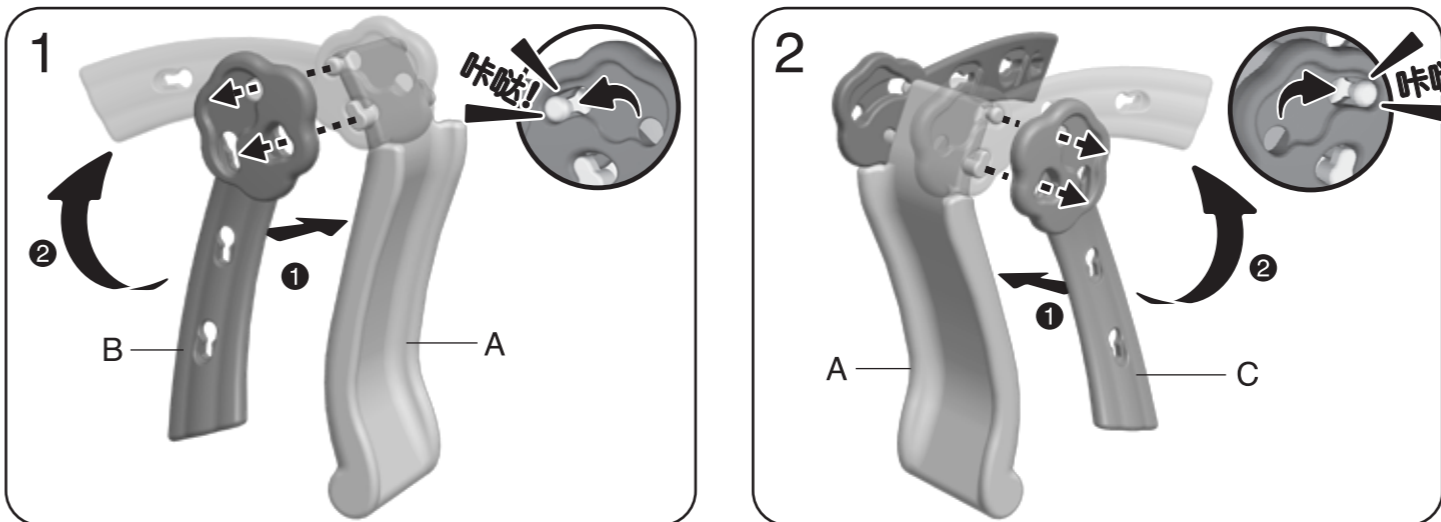
零件



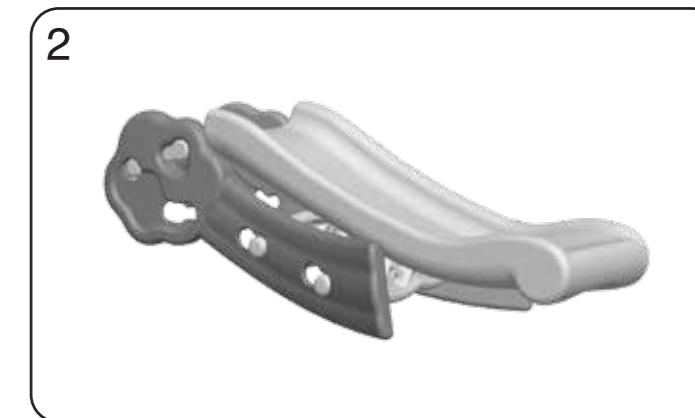
编号	名称	数量
A	滑梯	1
B	右侧板	1
C	左侧板	1
D	上踏板	1
E	下踏板	1

注: 图片并非按比例绘制。

组装部件:



折叠存储:



安全维护和保养

- 请每月检查所有零件, 确保所有零件已牢固扣紧, 此重要检查必须每季进行。
- 定期每月检查产品, 并留意零件磨损程度。零件如有漏失或损坏可能会导致受伤。
- 定期检查保护材料, 确保它们处于良好的状态, 必要时予以更换。
- 当滑梯表面湿滑时, 请不要让儿童攀爬, 以避免滑倒或摔倒。
- 请勿将此设备外置于强风中或恶劣天气下。
- 当滑梯被强光直接照射时, 使用前请检查产品表面的温度, 如果滑道过热, 可冷水使其降温后再让儿童使用。使用期间请定期检查滑道。
- 当温度低于0°C (摄氏) 或32°F (华氏) 时, 建议不要在户外使用本产品。在极端寒冷天气下, 塑料会失去弹性变得易脆破裂。请将产品移至室内保存。
- 寒冷季节请重新安装塑料配件。
- 切勿添加任何非原装产品设计的配件, 如 (包括但不限于) 跳绳、晾衣绳、皮缘饰品、线缆和锁链等。这些会存在潜在的窒息危险。
- 组装完毕请将所有包装材料丢弃。
- 任何时候请保持警告标识的清晰易读。
- 请于安全地点及采用正确方式拆卸处理本产品, 以避免任何危险或其他伤害。
- 定期用肥皂水清洁滑道以避免产生静电。

客户服务支援
生产商: 利宾来塑胶工业 (深圳) 有限公司
生产地址: 中国广东省深圳市宝安区龙华镇清湖村
邮编: 518109
中国客户热线: 400-880-8638
国内电邮地址: sales@gnu-toys.com
©2018 Grow'n Up Limited.
高思维有限公司。版权所有。
中国制。

